

model no:

CN440N, CY430N,
ES530N, UP430N, WY430N



WABASH VALLEY

ACCESSORIES

ADD-ON ARMS

© Wabash Valley Manufacturing, Inc.

customer service:

ASSEMBLERS: If you find any parts missing or damaged, or if you're having difficulty assembling your furniture/equipment, call us at:

* Before calling, have your product model number available.

1-800-253-8619 (Inside U.S.A.)

260-352-2102 (Outside U.S.A.)

Monday thru Friday,
8:00 AM - 4:30 PM Eastern Time
(EXCEPT HOLIDAYS)

Any correspondence concerning our product should be sent directly to our Customer Service Manager at:

Wabash Valley Manufacturing, Inc.
505 E. Main Street
P.O.Box 5
Silver Lake, IN 46982 U.S.A.
FAX: 260-352-2160

maintenance:

Regular inspection and maintenance of all parts, and fasteners is necessary. Tighten all bolts and nuts. Inspect Tops, Seats, Legs, Braces and Fasteners periodically for wear or vandalism. Replace broken or worn parts immediately or take equipment out of service until repairs are made. Use genuine Wabash Valley replacement parts.

To restore plastisol coating to its luster after prolonged use, wash/rinse/dry and use Armor-All ® or similiar quality vinyl protectant.

KEEP THIS ASSEMBLY/SPECIFICATION SHEET FOR FUTURE REFERENCE.

specifications:

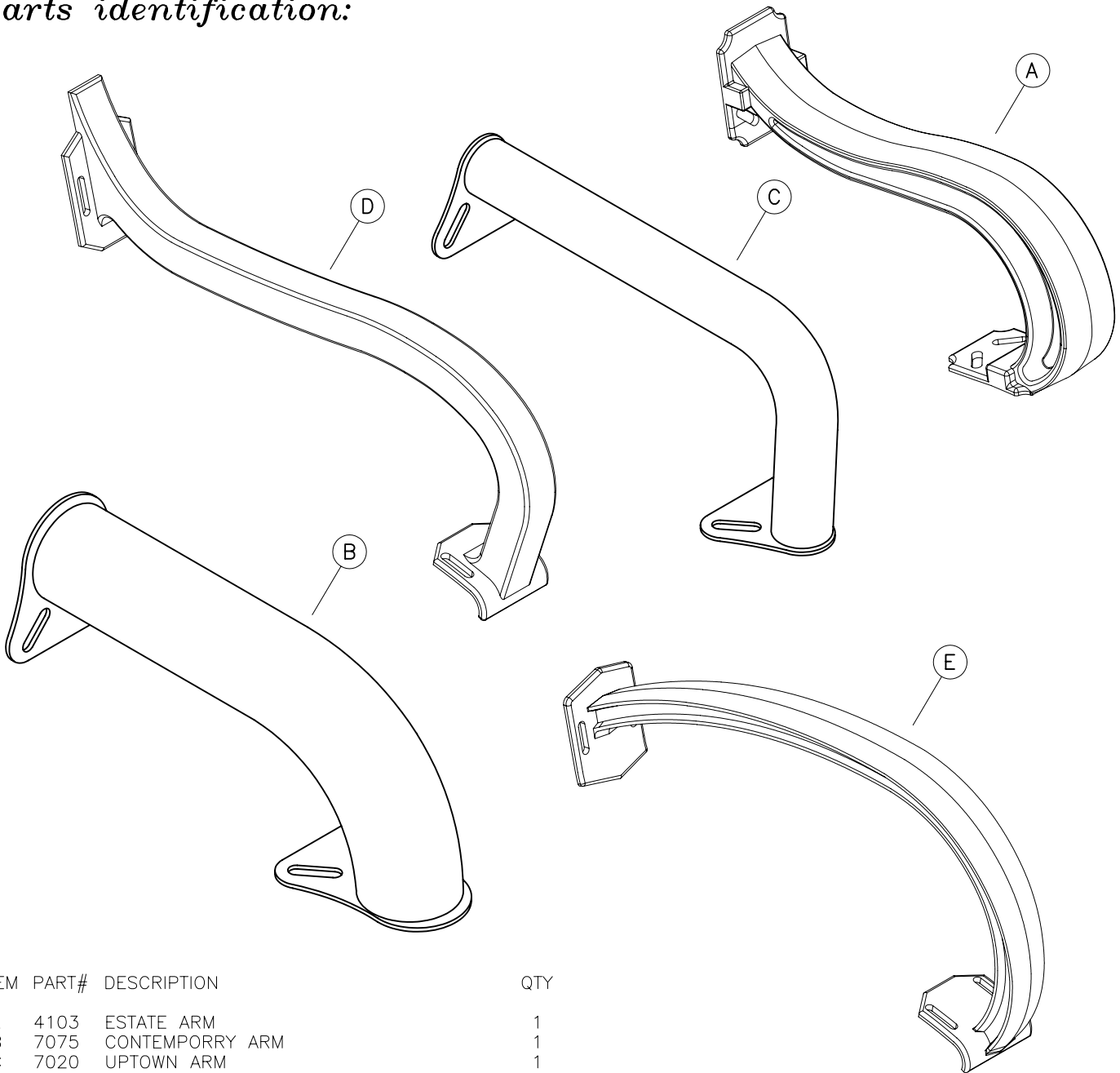
NOTE: We reserve the right to change specifications without notice.

Heat fused poly-vinyl coating, finished on inner-metal structure, to an approximate 3/16" thickness. Framework assemblies are finished with powder coating; electrostatically applied and oven cured according to powder manufacturer's specifications. Fasteners are stainless steel to resist corrosion.

ARMS:

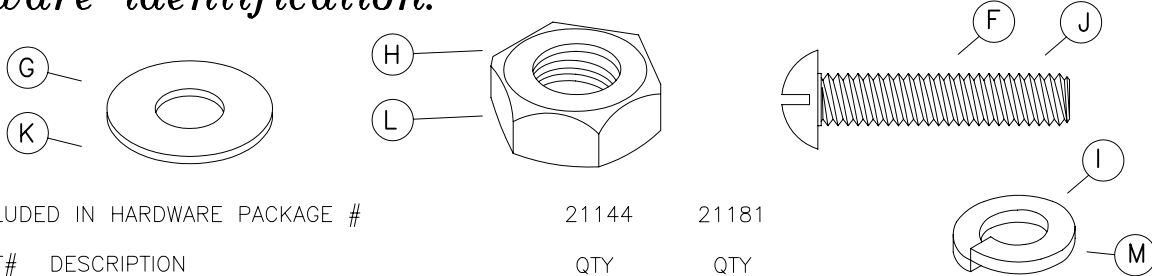
Estate, Courtyard and Wyatt arms and mounitng plates are cast aluminum. Comtemporary arms are 2 7/8" diameter and Uptown arms are 1.66 diameter galvanized steel tubing with 10 gage mounting plates.

parts identification:



ITEM	PART#	DESCRIPTION	QTY
A	4103	ESTATE ARM	1
B	7075	CONTEMPORARY ARM	1
C	7020	UPTOWN ARM	1
D	4052	COURTYARD ARM	1
E	4053	WYATT ARM	1

hardware identification:



ITEMS INCLUDED IN HARDWARE PACKAGE #		21144	21181	
ITEM	PART#	DESCRIPTION	QTY	QTY
F	17058	5/16-18 x 2" MACHINE SCREW - SS	4	0
G	17043	7/16" FLAT WASHER - SS	8	0
H	17032	5/16-18 HEX FINISH NUT - SS	4	0
I	17050	5/16" SPLIT LOCK WASHER - SS	4	0
J	17139	1/4-20 x 1 1/2" MACHINE SCREW - SS	0	4
K	17103	1/4" FLAT WASHER - SS	0	8
L	17017	1/4-20 HEX FINISH NUT - SS	0	4
M	17079	1/4" SPLIT LOCK WASHER - SS	0	4

ASSEMBLY TOOLS REQUIRED

- 1 - FLAT SCREW DRIVER
- 1 - 7/16" WRENCHES
- 1 - 1/2" WRENCHES

assembly procedures: IMPORTANT: Assemblers should be reasonably skilled in the assembly of commercial grade/heavy duty fabricated steel equipment.

To ensure proper assembly, it is suggested that you take adequate time to locate and identify each part. To prevent scratching of the finished pieces, we recommend this unit to be assembled on a clean, flat, solid, surface with a drop cloth, allowing plenty of working room. Also please read the instructions and study the sketches very carefully. A little extra time spent before assembly will be well worth it in performing a complete, proper assembly. Please note that all parts have been pre-cut and pre-drilled.

During the assembly process leave all bolts and nuts "finger tight", until the entire unit is completely assembled. This allows room for movement to level or adjust all seats, tops, benches, framework and braces if necessary. **After final adjustment and leveling, permanently tighten all nuts, bolts and fasteners.**

76

ESTATE, CONTEMPORARY, UPTOWN

STEP 1

Place arm on bench and adjust location slightly until the four bolts can be placed through the pattern of the bench, see Fig. 1. With one flat washer (G) on the machine screw (F), push the screw through from the front. Add one flat washer (G), one lock washer (I) on the back and then the nut (H). Insert all fasteners before tightening with screw driver and wrench.

COURTYARD, WYATT

STEP 1

Place arm on bench and adjust location slightly until the four bolts can be placed through the pattern of the bench, see Fig. 1. With one flat washer (K) on the machine screw (J), push the screw through from the front. Add one flat washer (K), one lock washer (M) on the back and then the nut (L). Insert all fasteners before tightening with screw driver and wrench.

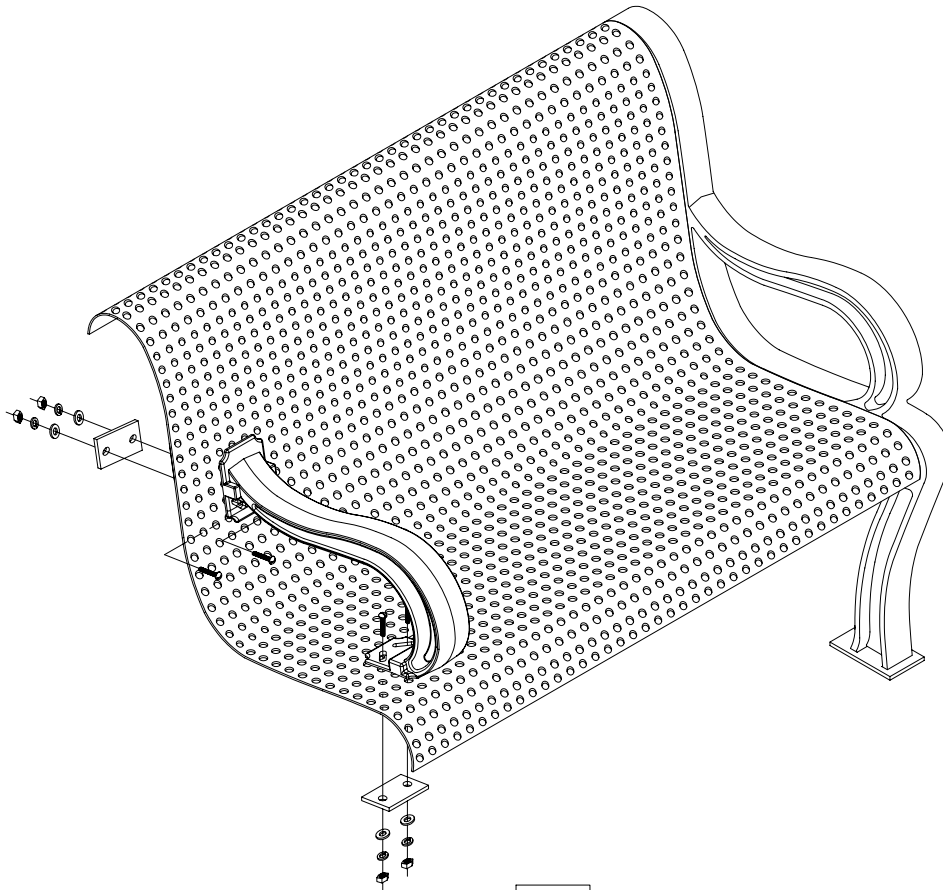


FIG. 1

installation: WARNING: The proper installation for Wabash Valley products may depend upon many factors unique to the site, location, or use of a particular product. Consult with your contractor or other professional to determine your specific installation requirements.